

Production guide

F200 Traffic (right / Pavement)



Format:

Zone:

Display duration:

Advertising medium:

Dimensions:

F200 Traffic

right / Pavement

2-52 weeks

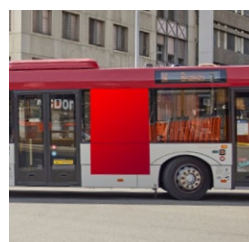
Car bodywork and windscreen

116,5 x 170cm (w x h)

Positioning:

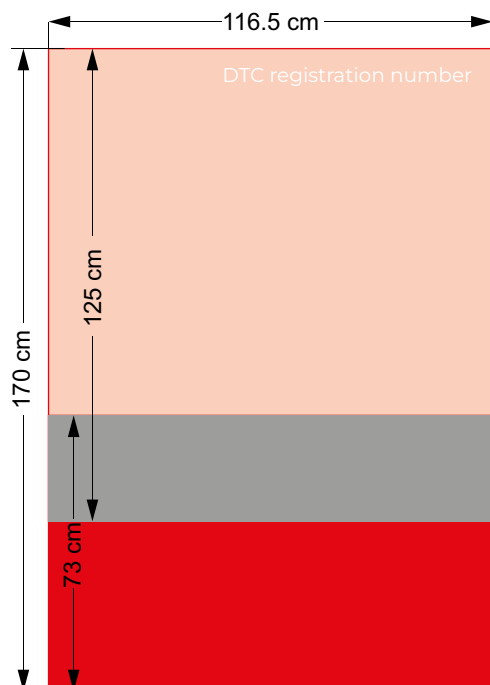
front

rear



Dimension plan drawings

Massplan / Plan des mesures / Piano quotato 1:10



Legend

- Window foil
- Covering foil (bodywork)
- not inscribable
- Overlap area
(transition from car body to window)

Notes

- The commissioned advertising technician shall ensure that suitable films and laminates are produced for the vehicle lettering and are properly and professionally mounted/dis-mounted on the vehicle.
- The films must comply with the statutory regulations and the approval number for Windows perforated films DTC (Dynamic Testing Center) must be printed clearly visible and the test certificate must be available.
- Do not place any content in the overlapping area.

Production guide

F200 Traffic (left / Street)



Format: **F200 Traffic**
Zone: **left / Street**
Display duration: **2-52 weeks**
Advertising medium: **Car bodywork and windscreen**
Dimensions: **116,5 x 170cm (w x h)**

Positioning:
front

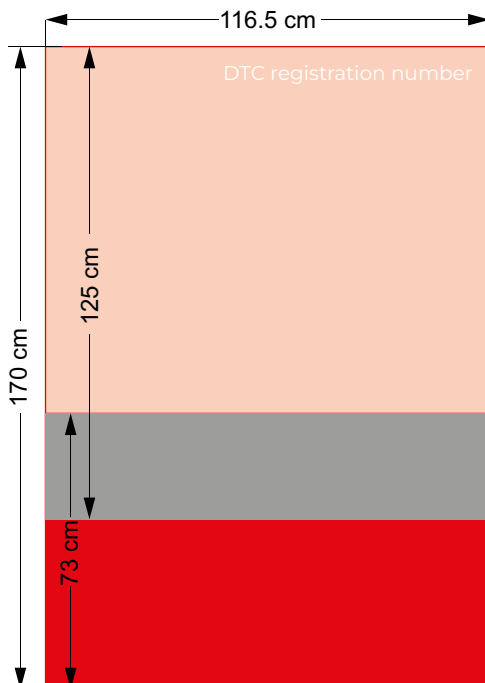


rear



Dimension plan drawings

Massplan / Plan des mesures / Piano quotato 1:10



Legend

- Window foil
- Covering foil (bodywork)
- not inscribable
- Overlap area
(transition from car body to window)

Notes

- The commissioned advertising technician shall ensure that suitable films and laminates are produced for the vehicle lettering and are properly and professionally mounted/dis-mounted on the vehicle.
- The films must comply with the statutory regulations and the approval number for Windows perforated films DTC (Dynamic Testing Center) must be printed clearly visible and the test certificate must be available.
- Do not place any content in the overlapping area.

Production guide

F200 Traffic (Back of bus)



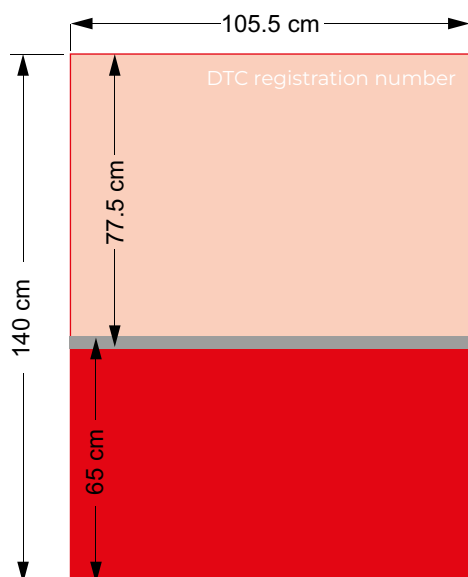
Format:	F200 Traffic
Zone:	Back of bus
Display duration:	2-52 weeks
Advertising medium:	Car bodywork and windscreen
Dimensions:	105,5 x 140cm (w x h)

Positioning:



Dimension plan drawings

Massplan / Plan des mesures / Piano quotato 1:10



Legend

- Window foil
- Covering foil (bodywork)
- not inscribable
- Overlap area (transition from car body to window)

Notes

- The commissioned advertising technician shall ensure that suitable films and laminates are produced for the vehicle lettering and are properly and professionally mounted/dismounted on the vehicle.
- The films must comply with the statutory regulations and the approval number for Windows perforated films DTC (Dynamic Testing Center) must be printed clearly visible and the test certificate must be available.
- Do not place any content in the overlapping area.